

Xerox 6705
A0-Capable Digital
Multifunction Device



Xerox Wide Format 6705 System
A0-Capable Digital
Multifunction Device
Achieving efficiency
through simplicity

Advanced functions more accessible than ever

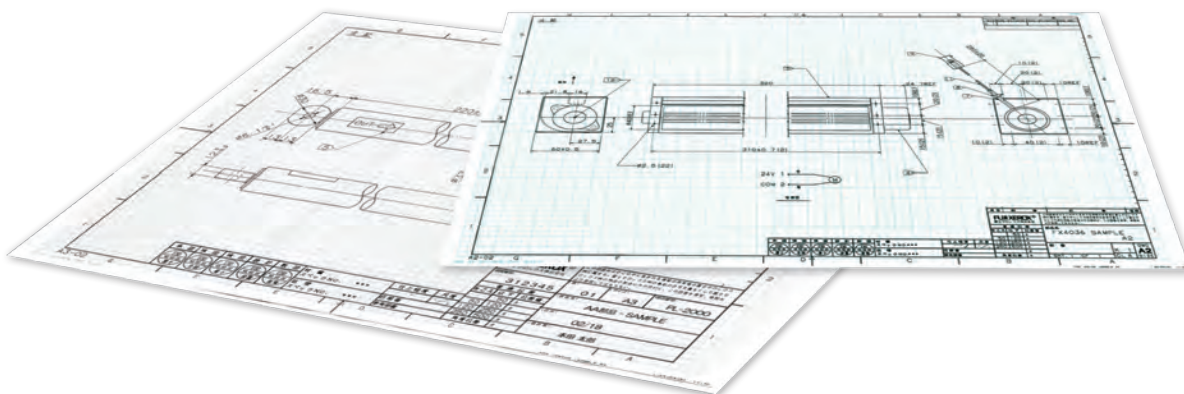
The Xerox 6705 is equipped with a colour scanner for accurately relaying the intent of engineers.

This compact digital multifunction device is capable of A0-size output while offering the ease of use, functionality, and productivity of office multifunction devices.



Xerox 6705

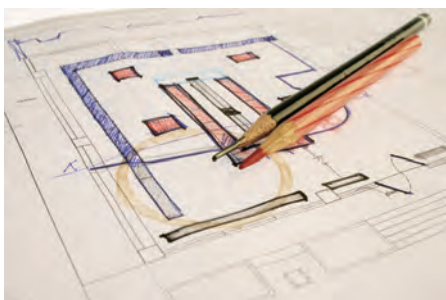
- Copier/Scanner/Printer
- A0-size output
- 3 sheets per minute
- Continuous output: 99 sheets
- Max. length: 5 m (plain paper)*
- Max. width: 914 mm (36 inches)
- Paper supply system: 2 rolls of paper & manual paper feed



* Optional, maximum length up to 15 m with Additional System Memory installed.

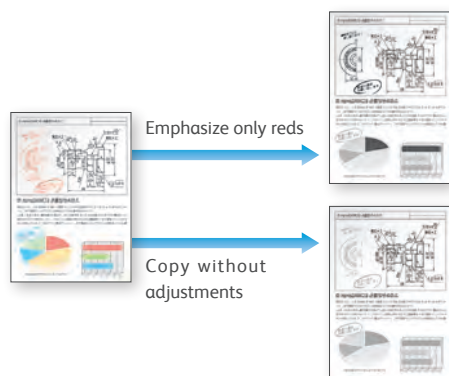
Scanning of large-format colour drawings

With the Xerox 6705, you can create high resolution 600 dpi full-colour scans of large documents (in A0-size) such as presentation documents, coloured blueprints, and drawings marked with corrections or work instructions. By scanning your documents and keeping electronic records, you create an environment where management is made more efficient.



Colour density adjustment using colour scanner characteristics

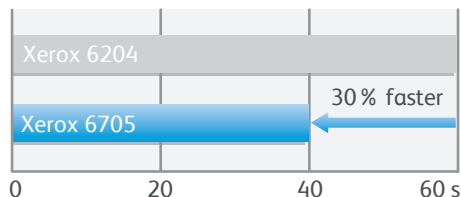
The colour density adjustment feature gives you the flexibility to determine your scan preference such as accentuating signatures and seals, emphasizing on the density of red markings, and turning off specific colours.



High performance

With a first print/copy output time about 30% faster than existing devices and output speed of three A0-size sheets per minute for both copying and printing, the Xerox 6705 won't keep you waiting even when outputting multiple-page documents. What's more, its high performance does not come at the sacrifice of energy saving and quiet operation.

First print time (FPOT) Comparison



Digitization of drawings

- Colour scanner available
- Save your scanned documents to a PC
- Simultaneously save and print files with the Multi Send function

Productivity

- Fast copy and print speed of 3 A0-size sheets per minute
- High-speed scanning at 203.2 mm/s* in monochrome and 67.6 mm/s* in colour
* At scanning resolution of 300 dpi or lower.
- Support of scanning while printing

High quality

- High-quality image input and output at 600 dpi × 600 dpi

Operability

- Compact design & familiar interface allowing side-by-side use with multifunction office devices
- User-friendly 10.4-inch colour touch screen for easy viewing
- Easy paper loading

Security

- Security Print function for outputting confidential documents
- Private Print function for preventing information leaks
- Passwords for scanned documents can be set on the main unit
- Authentication and user restrictions are supported

Latest network environment

- IPv6 ready
- Ethernet 1000BASE-T ready

Environmental, energy saving and safety standards

- Designed for low power consumption, low noise and superior safety
- Complies with Act on Promoting Green Purchasing
- Complies with International Energy Star Program



Operability

Front-loading, front-output compact body and user-friendly operation



Compact design & familiar interface allowing side-by-side use with multifunction office devices

The Xerox 6705 is designed to suit any office. In addition to a compact design and quiet operation, it offers a familiar interface similar to that of multifunction office devices.

10.4-inch colour touch screen

The large colour touch screen offers superb viewability and intuitive operation, providing a work environment easy to understand for anyone. The control panel can be tilted up and down and swiveled left and right.

Job memory

This feature allows you to save to memory up to 40 settings each for frequently used copy and scan functions.

Easy paper loading

The Xerox 6705 is equipped with an auto loading feature, which enables roll paper to be fed automatically and effortlessly by positioning the paper's edge in place. When a print job is completed, the machine automatically cuts the paper.

The Xerox 6705's two-roll capacity allows you to install paper of two different sizes and/or two different types such as regular paper, tracing paper and film, at the same time.



Auto mode for easy copying

In the Auto mode, the Xerox 6705 automatically selects the most suitable paper type and reduce/enlarge ratio according to the original size for simple and efficient copying.

Manual mode is also available to enable you to configure the settings as you prefer.



Auto mode

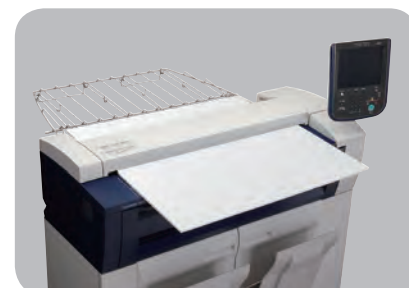
Easily perform output to paper that has not been loaded

When paper of the specified output size has run out, or if no appropriate size of paper is loaded on the device, you can continue printing by alternatively specifying manual feed, to minimize disruption to your print job. Manual feed is also convenient for outputting paper sizes that are not frequently used.

Options



Scanner Catch Tray



Heavy Document Kit

Scan

Quickly scan hand-drawn drawings and documents at optimum resolution and save the data you want on your network.

Multi Send function for concurrent file saving and printing

This function allows you to simultaneously save a file to a PC on your network and print it out just by scanning an original. Moreover, if other multifunction devices or printers exist on the same network, you can also select those devices as output destinations. This allows you to perform selective output of large sizes on wide-format devices, and small sizes on office multifunction devices.

Push scan (data saved to PC)

Transfer of scanned documents to a PC via the network (SMB protocol) can be specified on the touch screen.

Speedy digitization even of hand-drawn drawings and documents

The Xerox 6705 offers high-speed scanning at 203.2 mm/s¹ in monochrome and 67.6 mm/s in colour, making short work of even sizeable scan jobs and allowing you to quickly digitize originals such as hand-drawn drawings and documents with high image quality.

¹At scanning resolution of 300 dpi or lower

Concurrent scanning and printing

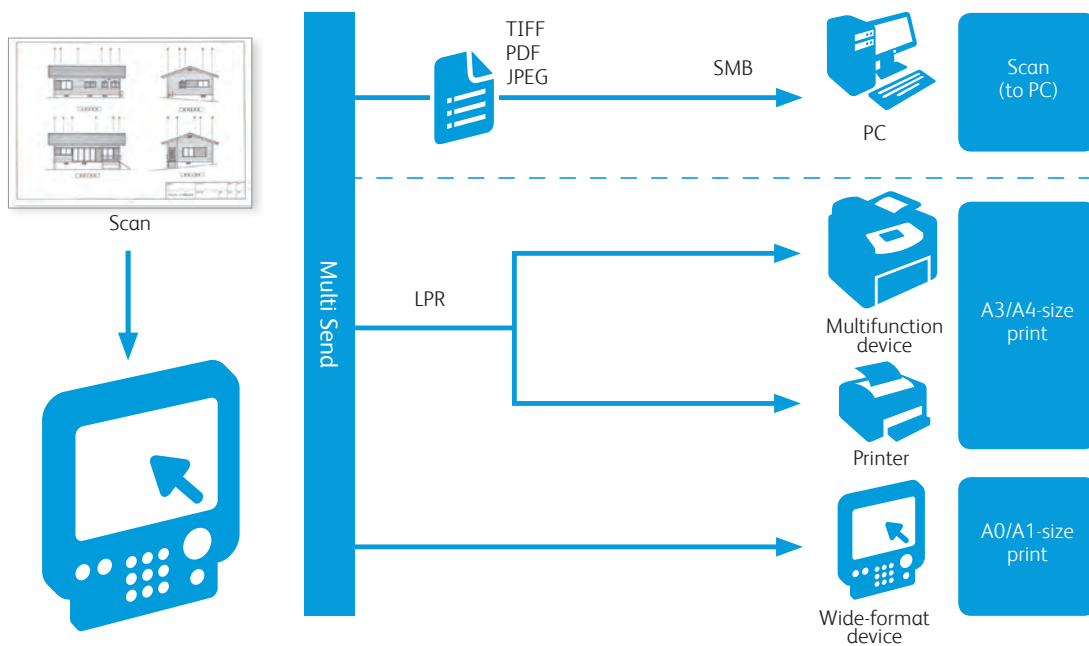
The Xerox 6705 allows you to work more efficiently by enabling you to begin scanning the next document without having to wait for your print jobs to be completed.

Store to Folder

You can save scanned documents to the machine's folder and then import them to PCs on the network.

Importing method

CentreWare Internet Services	Importing using a web browser
TWAIN compatible application	Importing from an application such as DocuWorks
Folder Viewer 3	Importing to PC without using an application



Copy/ Print

Easily get the desired results.

High-quality input and output at 600 × 600 dpi

You can make copies and printouts that sharply reproduce the diagonals, curves and thin straight lines required in drawings, while maintaining the halftones required in engineering materials, including text, photos and illustrations.

Optimum image quality for each original

You can make beautiful copies of documents whose background colour density has changed, including text manuscripts, drawings, photos, blueprints, transparencies, and cut-and-pastes, using the image quality best suited for each document. For example, when making a copy of a blueprint, you can remove the base colour if it is bothersome for a more pleasing result.

Sample Copy for the best result

You can copy part of the original as a sample to determine which settings will produce the best result. Any area can be specified as the sample, and you can vary the settings, including the reduce/enlarge ratio, density level, and original type, for the specified area.



Original



Sample copy
Density list



Copy from Memory to make copies with different settings without reloading

You can print additional copies of the last copied document while changing settings without having to copy it again.

Reduce/enlarge ratio from 25% to 400% A4 to A0, A0 to A4, etc.

The reduce/enlarge ratio when copying can be finely adjusted in 0.1% increments, and the vertical and horizontal reduce/enlarge ratios can be independently specified.

3 paper cut modes for roll paper

The cut mode can be specified according to the application, with a choice between standard size cut, synchronized cut for cutting the paper according to the length of the document, and variable length cut for cutting the paper at an arbitrary length*.

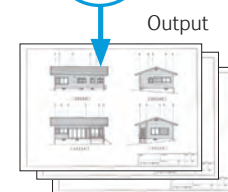
* The arbitrary length can be chosen between 210 mm and 5,000 mm.

Print different formatted files with BT-Plot Assistant in one go

BT-Plot Assistant is software that allows you to print files of different formats at the same time. A simple drag-and-drop feature offers the ability for files to be printed without having to start up multiple applications.



BT-PlotAssistant



Check the output status with a web browser

You can check the set paper size or status of a print job from a web browser on a client PC.



CentreWare Internet Services Screen

Security

Prevent information leaks.

Security Print

Documents not meant to be seen by third parties, confidential documents and other sensitive materials can be stored temporarily and printed by entering a password.

Private Print

Print jobs can be stored in the machine and output by the user following authentication.

* Operation in Authentication mode is required.

* Private Print cannot be used in combination with Security Print.

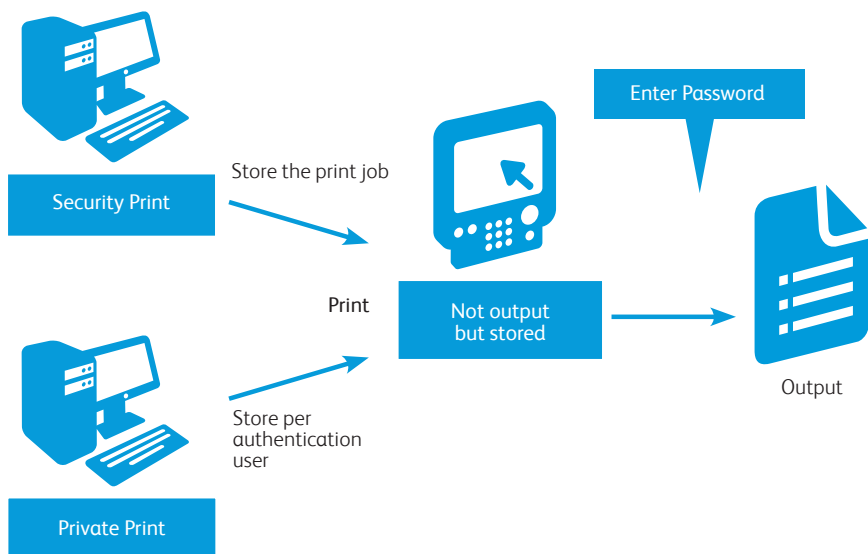
Enhance up security with encryption, overwriting, and batch deletion of data stored on the hard disk

The risk of information leaks from the machine can be minimised by encrypting or overwriting the data stored on the hard disk. Batch deletion of the stored data is also possible.

Scanned documents can be password protected on the machine

Scanned documents saved as PDF files can be protected by setting a password on the machine. Once protected, a file cannot be opened without inputting its password, and its printing and transfer can be restricted.

* For encrypted PDF files, Adobe Acrobat 7.0 or later is required.



Item	Description	
Type	Console Type	
Resolution	Data processing resolution: 600 x 600 dpi Output resolution: 600 x 600 dpi	
Continuous copy / printing speed	A0: 3 sheets/minute, A1: 4 sheets/min, A1 (landscape): 5 sheets/min, A2: 5 sheets/min, A2 (landscape): 7 sheets/min, A3: 7 sheets/min, A3 (landscape): 9 sheets/min, A4 (landscape): 11 sheets/min • The speed may be reduced due to the image quality adjustment. • The performance may be reduced depending on the paper type.	
Paper supplying sys.	2 Roll unit, Manual Feed	
Paper feed capacity	Roll paper feed	Roll media x 2 A0, A1, A2, A3, JIS B1, JIS B2, JIS B3, ISO B1, ISO B2, ISO B3, Special A0 (880mm/860mm), Special A1 (620mm/625mm), Special A2 (440mm/435mm), Special A3 (310mm), 36", 34", 30", 24", 22", 18", 17", 15", 12", 11" Width: 279.4 - 914.4 mm Outside diameter of the roll: 185 mm or less
	Manual feed	Manual feed: Cut Sheet A0, A1, A2, A3, A4, JIS B1, JIS B2, JIS B3, JIS B4, ISO B1, ISO B2, ISO B3, ISO B4, Special A0 (880mm/860mm), Special A1 (620mm/625mm), Special A2 (440mm/435mm), Special A3 (310mm), 36", 34", 30", 24", 22", 18", 17", 15", 12", 11", 9", 8.5" Width: 210 - 914.4 mm Length: 210 - 2,000 mm
Paper cutting system	Standard size cut, synchronized cut, variable length cut	
Copy media [†]	Roll paper feed	Plain paper : 60 - 110 g/m ² , Tracing paper : 90 - 112 g/m ² , Film : 75 - 100 um
	Manual feed	Plain paper : 60 - 110 g/m ² , Tracing paper : 90 - 112 g/m ² , Film : 75 - 100 um
Image loss width	Roll paper	When outside diameter of the roll is 100 mm or more: Lead edge 5 mm or less, Trail edge 5 mm or less, Right & Left 5 mm or less When outside diameter of the roll is less than 100 mm: Lead edge 8 mm or less, Trail edge 8 mm or less, Right & Left 5 mm or less
	Cut sheet	Lead edge 5 mm or less, Trail edge 5 mm or less, Right & Left 5 mm or less
Power source	AC 220 - 240 V, -10 to 6%, 10A for both 50/60 Hz	
Power consumption	Maximum: 1.5kW, Sleep mode: 13W	
Warm-up time	135 seconds or less (when the room temperature is at 22°C and the humidity is at 55%)	
Dimensions	Width 1,410 x depth 710 x height 1,420 mm (with the control panel)	
Floor space	Standard configuration: Width 1,310 x depth 710 mm When the original stock flat tray is installed: 1,310 x depth 1,510 mm	
Weight	260 kg (without toner and paper).	

† It is encouraged to use paper recommended by Xerox. Printing may not be performed correctly depending on the use conditions.

For Your Safe Use
Before using the product, read the Instruction Manual carefully for proper use. Use the product with an appropriate adequate power source and voltage displayed. Be sure to establish a ground.
In the case of a failure or short circuit, an electric shock may result.

Descriptions in this material, product specifications and / or appearances are subject to change without prior notice due to improvements. Please note that the product colour appears differently from the actual colour as a result of properties of papers or printing ink. Other company names or product names are registered trademarks or trademarks of each company.

Item	Description
Original Feed Sys.	Original transfer type
Original Size	Max. width 914.4 mm, min. width 176 mm Max. length 15,000 mm, min. length 210 mm
Original Thickness	When ejecting frontward (when the U-turn output guide is installed): 0.05 - 0.2 mm When ejecting rearward: 0.05 - 5 mm†
Original Type	Text & Line, Photo & Text, Printed Original, Photograph, Blueprint, Transparent, Uneven-Toned Background
Scan Resolution	600x600dpi
Copy (Media) Size	Plain paper: Width: 210 - 914.4 mm, Length: 210 - 5,000 mm Tracing paper/Film: Width: 210 - 914.4 mm, Length: 210-2,500 mm
Continuous Copy Pages	Continuous Copy Pages 99 sheets
First Copy Time	35 seconds or less (with A0 size original, 100% copy, upper roll 1)
Magnification	Same magnification 1:1 +/- 0.4% (when the room temperature is at 22°C and the humidity is at 55%) Reduce/enlarge presets 1:0.250, 1:0.353, 1:0.500, 1:0.707, 1:1.414, 1:2.000. Custom reduction/enlargement ratios 1:0.250 - 1:4.000 (in 0.1% increments)
Memory capacity	Standard: 1GB, Maximum: 1.5GB (with Add System Memory)
Copy/Original Input Feature	Manual feed copy, copy from memory (additional copy)††, interrupt mode copy, Auto mode (auto selection of original orientation, auto paper select, auto magnification), manual mode, reduce/enlarge, paper supply selection, paper cut mode, original type, lighten/darken, sharpness, contrast, background suppression, threshold sort, adjust color density, original width, image shift, scan start position, edge erase, mirror image, invert image, scan speed, image rotation, collation (uncollated/collated), lead & trail margins, sample copy

Print Feature

Item	Description
Print (Media) Size	Same as the copy (media) size
Continuous Print Pages	99 sheets
First Print Time	40 seconds or less (with A0 size original, 1.28 MB data, upper roll 1)
Magnification Accuracy	100 +/- 0.4% (except for larger than A0 size)
Page Description Language	Adobe® PostScript® 3TM
Supported Protocol	TCP/IP (LPR, FTP)

† It is possible to scan a flat and hard original (styrene board, heavy paper) whose thickness exceeds 0.2 mm, up to 1 mm thick. The flat and hard original must be supported by your hand while scanning. However, the document transportation and the output image quality is out of guarantee. When scanning a thick original whose thickness is between 1 and 5 mm, the optional Heavy Document KIT is required.
* If the storage medium (hard disk) of the machine fails, all its data, including any received data, stored data, and registered configurations, may be lost. Xerox shall not be held responsible for any direct or indirect damages arising from or caused by such data loss.
* Repair components will be available for at least 5 years after the product is no longer manufactured.

Operating System	Windows® XP, Windows Server® 2003, Windows Vista®, Windows Server® 2008, Windows® 7, Windows® XP x64 Edition, Windows Server® 2003 x64 Editions, Windows Vista® 64bit, Windows Server® 2008(x64), Windows Server® 2008 R2 (x64), Windows® 7 64 bit
Emulation	HP-GL series : HP-GL, HP-GL/2, HP-RTL (Compliant with HP Designjet 1050c) VERSATEC series : VRF, VCGL, FX-MMR Others : TIFF, JFIF (JPEG), CALS, CGM†, Adobe® PostScript® 3TM†, PDF
Interface	Ethernet (1000BASE-T/100BASE-TX/10BASE-T)

Scan Feature

Item	Description	
Type	Standard	Colour scanner
Scan Size	Width 176 - 914.4 mm, Length 210 - 15,000 mm	
Scan Resolution	600 x 600, 400 x 400, 300 x 300, 200 x 200, 150 x 150 dpi	
Scanning Halftone	Full colour, 256 levels of grey, Black and white (binary), pseudo grey scale (binary)	
Scan Mode	Text & Line, Photo & Text, Printed Original, Photograph, Blueprint, Transparent, Uneven-Toned Background	
Original Scan Speed	Full colour	Mid speed - 67.6 mm/sec (resolution of 300 dpi or less), very low speed - 33.8 mm/sec (resolution of 400 dpi or more)
	Non-Full colour	Very high speed - 203.2 mm/sec (resolution of 300 dpi or less), high speed - 101.6 mm/sec, low speed 50.8 mm/sec
Output Format	Format	TIFF, PDF, JPEG
	Compression method	MMR (for black and white scanning), JPEG (for full colour/grey scale scanning)
Scan to Folder	Interface	Ethernet (1000BASE-T/100BASE-TX/10BASE-T)
	Protocol	TCP/IP, HTTP
	Driver	Network Scanner Utility 3
Scan to PC	Interface	Ethernet (1000BASE-T/100BASE-TX/10BASE-T)
	Protocol	TCP/IP SMB
	O.S.†	Windows® XP, Windows Server® 2003, Windows Vista®, Windows Server® 2008, Windows® 7, Windows® XP x64 Edition, Windows Server® 2003 x64 Editions, Windows Vista® 64bit, Windows Server® 2008(x64), Windows Server® 2008 R2 (x64), Windows® 7 64 bit
Printer Transfer	Interface	Ethernet (1000BASE-T/100BASE-TX/10BASE-T)
	Protocol	TCP/IP LPR

† For the latest supported operating systems, please visit the Xerox home page.



Reproduction Prohibitions Please note that reproduction of the following is prohibited by law: Domestic and overseas bank notes and coins, government-issued securities, national bonds and local bond certificates. Unused postage stamps and post cards. Certificate stamps stipulated by law. The reproduction of works for copyright purposes (literary works, musical works, paintings, engravings, maps, cinematographic works, photographic works, etc.) is prohibited except when they are reproduced personally, at home or within limited range according to the above. This product is equipped with an anti-counterfeit feature. This feature is not intended to prevent illegal reproduction. Be extremely careful about the management of equipment used.